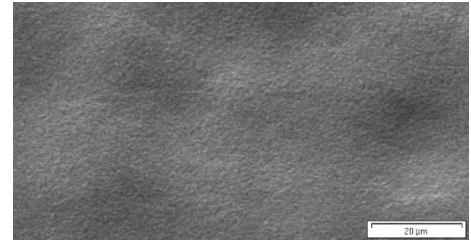


SMOOTH PROFILE COPPER FOIL ON BOTH SIDES WITHOUT BONDING TREATMENT.



TYPICAL SUBSTRATES

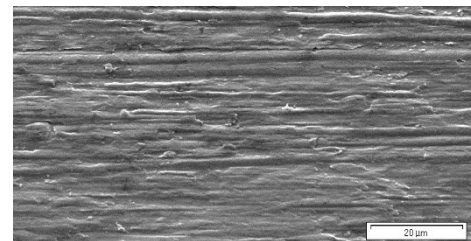
Carbon/graphite coating.



Untreated Electrolyte Side

TYPICAL PROCESSES

Designed for cylindrical, prismatic and pouch cell types.



Untreated Drum Side

TYPICAL APPLICATIONS

Used as current collector for the anode of Li-Ion batteries.

TYPICAL AVERAGE PROPERTIES*

BF-PLAINSTAINPROOF						
MEASURED PARAMETERS	UNITS	PRODUCT GAUGE			IPC	
Nominal Thickness	µm	6*	8	10	Specification IPC-4562A	Test Method IPC-TM-650
Area Weight	g/m ²	54	72	89	3.4.4	2.2.12
Drum Side Roughness (Ra)		≤ 0.35			3.5.6	2.2.17
Drum Side Roughness (Rz)	JIS	≤ 2.0			-	
	ISO	≤ 2.5			3.4.5	
Electrolyte Side Roughness (Rz)	JIS	≤ 2.0			-	
	ISO	≤ 2.5			3.4.5	
Tensile Strength Transverse (RT)	MPa	≥ 276 (≥ 40)			3.5.1	2.4.18
Tensile Strength Transverse after 10 min at 130 °C (RT)						
Tensile Strength Transverse after 1h at 175 °C (RT)						
Elongation Transverse (RT)	%	≥ 5			3.5.3	
Elongation Transverse after 10 min at 130 °C (RT)						
Elongation Transverse after 1h at 175 °C (RT)						
Resistivity	Ωg/m ²	≤ 0.181	≤ 0.171		3.8.1.2	2.5.14
Purity	%	≥ 99.9			3.8.1.1	2.3.15

* pre-series

ALTERNATIVE

Please also refer to SR-PLAINSTAINPROOF and HTS-PLAINSTAINPROOF datasheets.

* ALL OF THIS TECHNICAL INFORMATION HAS BEEN DETERMINED WITH DUE CARE AND THOROUGHNESS. HOWEVER, BECAUSE THE CONDITIONS OF USE AND PROCESS AND APPLICATION TECHNOLOGIES EMPLOYED CAN SUBSTANTIALLY VARY, THE PROVIDED DATA AND FIGURES CAN ONLY SERVE AS NON-BINDING GUIDELINES. THEY DO NOT CONSTITUTE A GUARANTEE THAT THE PURCHASED ITEM WILL POSSESS CERTAIN ATTRIBUTES. FOR THIS REASON, NO LIABILITY WHATSOEVER CAN BE ASSUMED FOR THEM. THE BUYER IS OBLIGED TO CHECK THE SUITABILITY OF ALL SUPPLIED PRODUCTS.