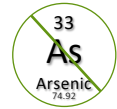


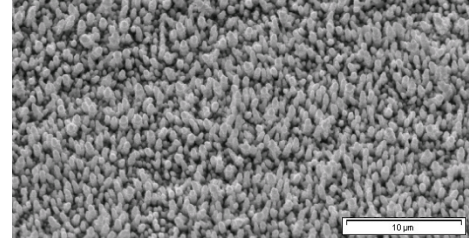
HIGH DUCTILITY COPPER FOIL FOR 2-LAYER FCCL.

IPC
Grade 10 & 3



TYPICAL SUBSTRATES

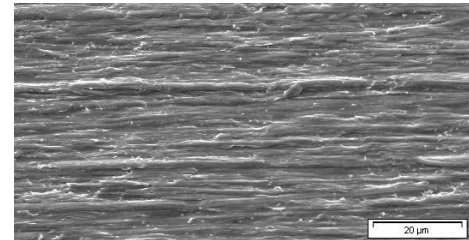
Polyimide resin systems.



Treated Electrolyte Side

TYPICAL PROCESSES

Lamination on a polyimide film to form a 2-layer flexible copper clad laminate (adhesiveless with a greater flexibility compared to 3-layer FCCL).



Untreated Drum Side

TYPICAL APPLICATIONS

Smartphones, tablets, laptops.

TYPICAL AVERAGE PROPERTIES*

BF-TZA-FX									
MEASURED PARAMETERS		UNITS	PRODUCT GAUGE					IPC	
Nominal Thickness		µm oz.	9 1/4	12 3/8	18 1/2	35 1	70 2	Specification IPC-4562A	Test Method IPC-TM-650
Area Weight		g/m ²	79	112	152	285	574	3.4.4	2.2.12
Untreated Side Roughness (Ra)		µm	≤ 0.35 (≤ 14)					3.5.6	2.2.17
Treated Side	JIS		≤ 2.5			≤ 2.0		-	
Roughness (Rz)	ISO		≤ 3.1			≤ 2.5		3.4.5	
Tensile Strength Transverse (RT)		MPa (k.Lb/in ²)	≥ 276 (≥ 40)					3.5.1	2.4.18
Elongation Transverse (RT)		%	4 - 14	5 - 15	7 - 25	10 - 35	15 - 40	3.5.3	
Peel Strength FR4 halogen-free ^[1] (RT)		N/mm (Lb/in)	≥ 0.7 (≥ 4.0)					3.5.4	2.4.8

[1] Laminate construction with thickness ≥ 0.5 mm

ALTERNATIVE

Please also refer to SR-TZA-B-FX datasheet.

* ALL OF THIS TECHNICAL INFORMATION HAS BEEN DETERMINED WITH DUE CARE AND THOROUGHNESS. HOWEVER, BECAUSE THE CONDITIONS OF USE AND PROCESS AND APPLICATION TECHNOLOGIES EMPLOYED CAN SUBSTANTIALLY VARY, THE PROVIDED DATA AND FIGURES CAN ONLY SERVE AS NON-BINDING GUIDELINES. THEY DO NOT CONSTITUTE A GUARANTEE THAT THE PURCHASED ITEM WILL POSSESS CERTAIN ATTRIBUTES. FOR THIS REASON, NO LIABILITY WHATSOEVER CAN BE ASSUMED FOR THEM. THE BUYER IS OBLIGED TO CHECK THE SUITABILITY OF ALL SUPPLIED PRODUCTS.