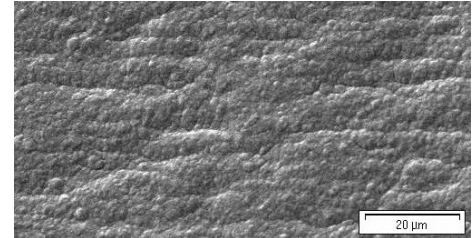


HIGH TENSILE STRESS RELEASE COPPER FOIL WITHOUT BONDING TREATMENT.



TYPICAL SUBSTRATES

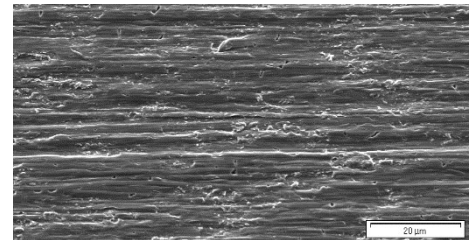
Carbon/graphite coating.



Untreated Electrolyte Side

TYPICAL PROCESSES

Designed for cylindrical and prismatic cell types as high elongation properties will allow stress release during winding of the electrode. High Tensile Strength at room temperature allows the use of thinner foil and the load of more active material during the coating process (improved manufacturing yield).



Untreated Drum Side

TYPICAL APPLICATIONS

Used as current collector for the anode of Li-Ion batteries.

TYPICAL AVERAGE PROPERTIES*

SR-PLAINSTAINPROOF							
MEASURED PARAMETERS	UNITS	PRODUCT GAUGE			IPC		
Nominal Thickness	µm	6	8	10	Specification IPC-4562A	Test Method IPC-TM-650	
Area weight	g/m ²	54	72	89	3.4.4	2.2.12	
Drum Side Roughness (Ra)	µm	≤ 0.35			3.5.6	2.2.17	
Drum Side Roughness (Rz)		JIS	≤ 2.0				-
		ISO	≤ 2.5				3.4.5
Electrolyte Side Roughness (Rz)		JIS	≤ 2.0				-
		ISO	≤ 2.5				3.4.5
Tensile Strength Transverse (RT)	MPa (k.Lb/in ²)	≥ 461 (≥ 67)			3.5.1	2.4.18	
Tensile Strength Transverse after 10 min at 130 °C (RT)		≥ 434 (≥ 63)					
Tensile Strength Transverse after 1h at 175 °C		≥ 230 (≥ 33)					
Elongation Transverse (RT)	%	≥ 3	≥ 4	≥ 5	3.5.3		
Elongation Transverse after 10 min at 130 °C (RT)			≥ 8				
Elongation Transverse after 1h at 175 °C (RT)							
Resistivity	Ωg/m ²	≤ 0.181	≤ 0.171		3.8.1.2	2.5.14	
Purity	%	≥ 99.9			3.8.1.1	2.3.15	

ALTERNATIVE

Please also refer to BF-PLAINSTAINPROOF and HTS-PLAINSTAINPROOF datasheets.

* ALL OF THIS TECHNICAL INFORMATION HAS BEEN DETERMINED WITH DUE CARE AND THOROUGHNESS. HOWEVER, BECAUSE THE CONDITIONS OF USE AND PROCESS AND APPLICATION TECHNOLOGIES EMPLOYED CAN SUBSTANTIALLY VARY, THE PROVIDED DATA AND FIGURES CAN ONLY SERVE AS NON-BINDING GUIDELINES. THEY DO NOT CONSTITUTE A GUARANTEE THAT THE PURCHASED ITEM WILL POSSESS CERTAIN ATTRIBUTES. FOR THIS REASON, NO LIABILITY WHATSOEVER CAN BE ASSUMED FOR THEM. THE BUYER IS OBLIGED TO CHECK THE SUITABILITY OF ALL SUPPLIED PRODUCTS.